

## **San Pablo Avenue Retail**

Perfect for Fitness, Showroom/Gallery, or Home Decor



### **2119 San Pablo Avenue**

In the West Berkeley Design Loop

Nearby to Home Furnishings, Accessories, and Home Improvement Stores

**Size:** +/- 2,440 rentable square feet

**Lease Rate:** \$2.25 psf NNN

Contact:

**Kevin Gordon**

510-898-0513

[kevin@gordoncommercial.com](mailto:kevin@gordoncommercial.com)

License #: 01884390

---

### **GORDON COMMERCIAL REAL ESTATE SERVICES**

2091 Rose Street Berkeley, CA 94709 ~ (510) 704-1800 phone ~ (510) 704-1830 fax ~ License # 00789365

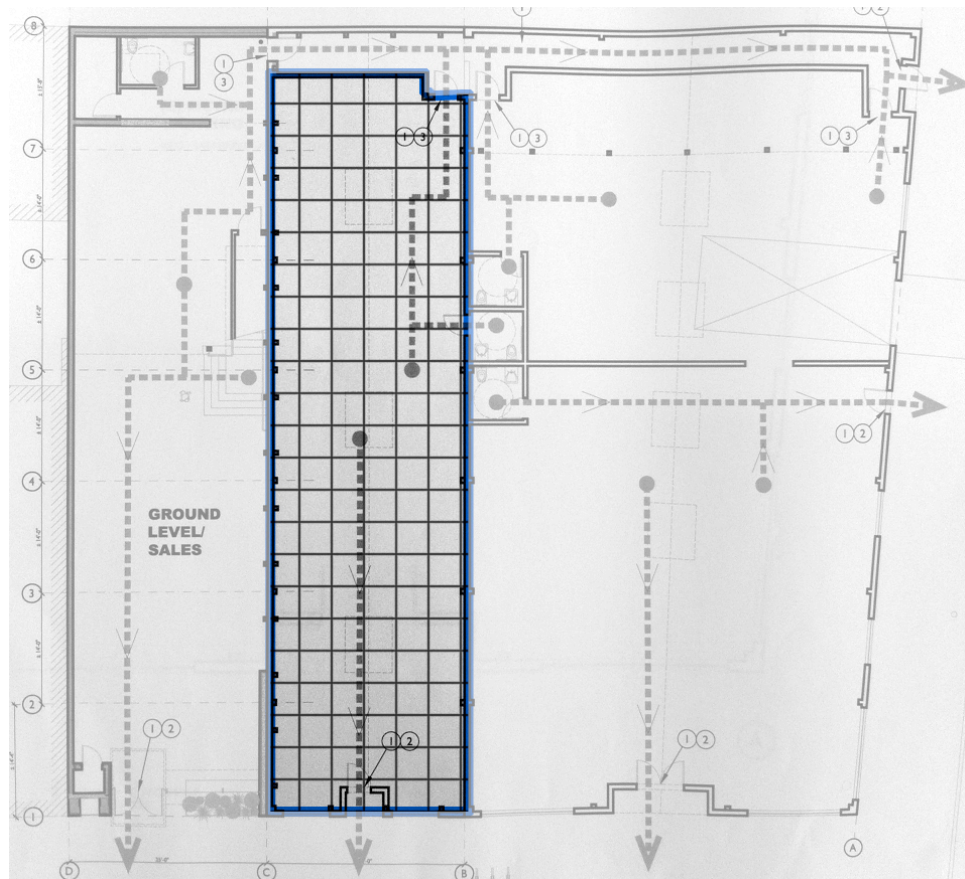
[www.gordoncommercial.com](http://www.gordoncommercial.com)

Page 1 of 2

## Building and Location Features

- Large open floor plan with high ceilings, skylights
- Exposed brick wall
- Perfect for galleries, showrooms, designer spaces, home décor establishments, fitness use and more
- Join neighbors Keetsa Mattress, Acme Bar, Gaumenkitzel German Restaurant, Smart and Final, Mi Pueblo Market, Lanesplitter Pizza, Highwire Café, West Berkeley Fencing Club
- Join a 2-mile stretch of home furnishings, accessories and improvement stores including Fenton MacLaren, Earthly Basics, Berkeley Lighting, Ohmega Salvage, and others. View more at [West Berkeley Design Loop](#)
- Adjacent to Berkeley's growing international food district
- Easy street parking

## Floorplan



---

## GORDON COMMERCIAL REAL ESTATE SERVICES

2091 Rose Street Berkeley, CA 94709 ~ (510) 704-1800 phone ~ (510) 704-1830 fax ~ License # 00789365

[www.gordoncommercial.com](http://www.gordoncommercial.com)

Page 2 of 2