

BUILDING FOR SALE :: 2277 SHATTUCK AVENUE, BERKELEY, CA

CENTRAL DOWNTOWN BERKELEY AT BART. MULTI-LEVEL SINGLE TENANT BUILDING



CONTACT: KEVIN GORDON

510 898-0513 • kevin@gordoncommercial.com • DRE# 01884390

APPROVED CITY PLANS FOR INTERIOR RENOVATIONS. WELL SUITED FOR MANY USES.

SIZE: ±8,335 SF Building:

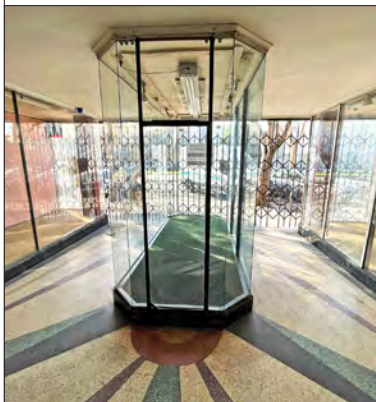
±2,800 rsf main floor
±2,538 rsf mezzanine
±2,997 rsf basement

APN: 57-2029-011-00

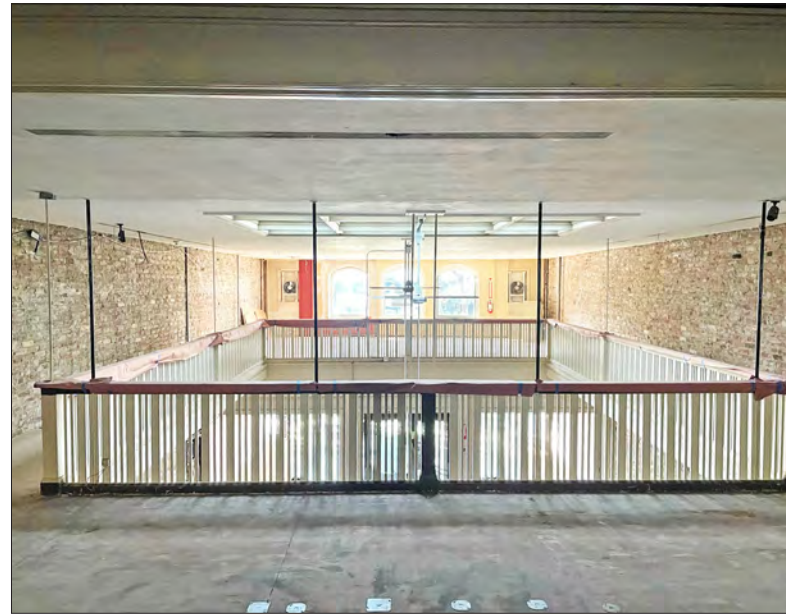
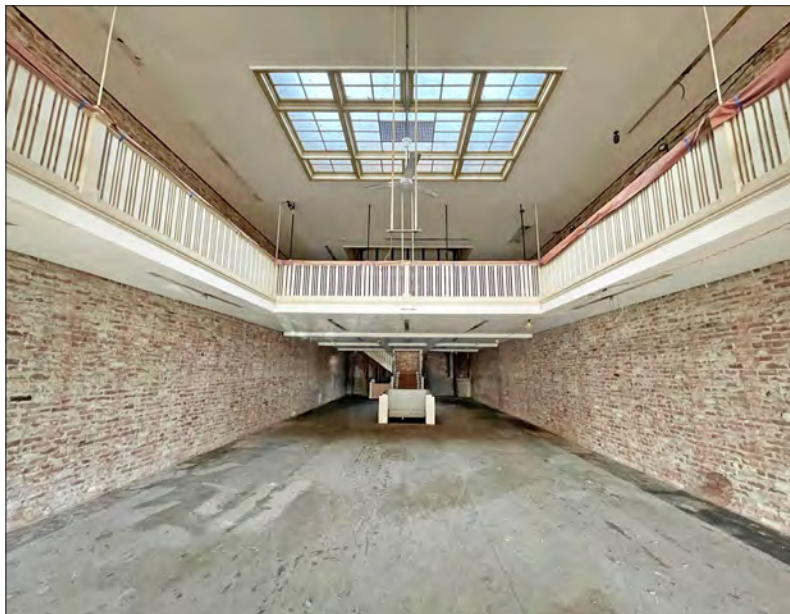
SALE PRICE: \$2,750,000

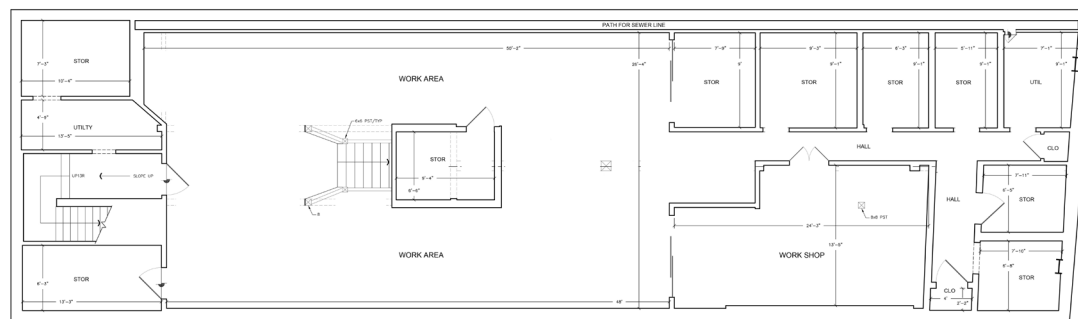
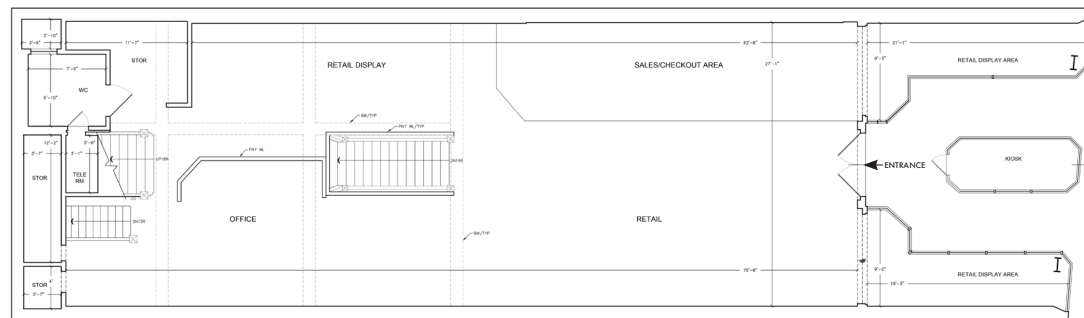
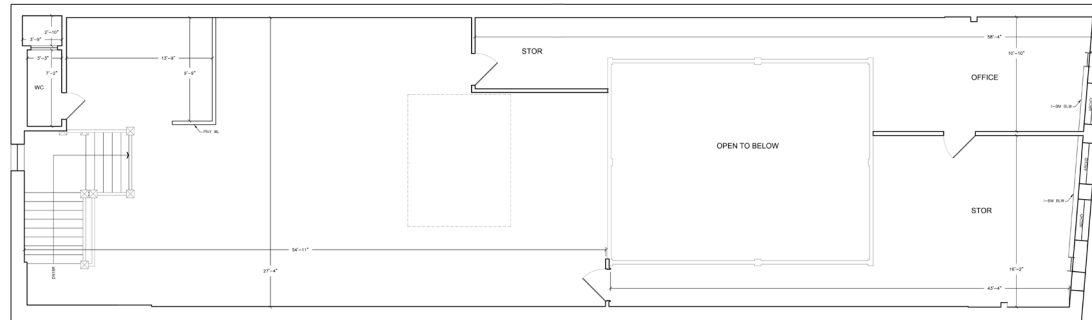
FEATURES

- Designated a Landmark by City of Berkeley in 2008
- Street frontage adorned with tile work surrounding 3 mezzanine level windows and beautiful Terrazzo floor at interior entrance
- Existing restroom on main level, plus non-compliant restroom on mezzanine level
- Ceiling heights vary by floor. Ground floor is ±10 feet height; mezzanine and basement ceiling heights are approximately 7+ feet
- High foot traffic every day
- 3 blocks to Trader Joe's
- Near Downtown Arts district, with Aurora and Berkeley Rep Theatres, and the California Jazz Conservatory
- Join other nearby retail, food and service companies including: Target, CVS, Sliver Pizzeria, Walgreens, Ippudo, Half Price Books, Pegasus Books, Comal, Jupiter, Angeline's Louisiana Kitchen, Peet's Coffee, and Eureka!
- Across from Regal UA Berkeley Cinema
- A short walk to North Shattuck's destination culinary scene, with restaurants and bakeries such as: The Cheese Board, Via Del Corso, Chez Panisse, Crepevine, Cupcakin' Bakeshop, and Grégoire Restaurant



The Hezlett's Silk Store Building is a Mediterranean-style building which originally housed an early telephone exchange. In 1925, the Mason-McDuffie Company (along with Masten & Hurd) redesigned it as a one-story building with mezzanine and basement. The first tenant, Hezlett Silk Store, remained for 35 years. In 1960, the Tupper & Reed music store moved in and remained until 2005. Located next door, at 2271 Shattuck Avenue, is the storybook-style Tupper & Reed building

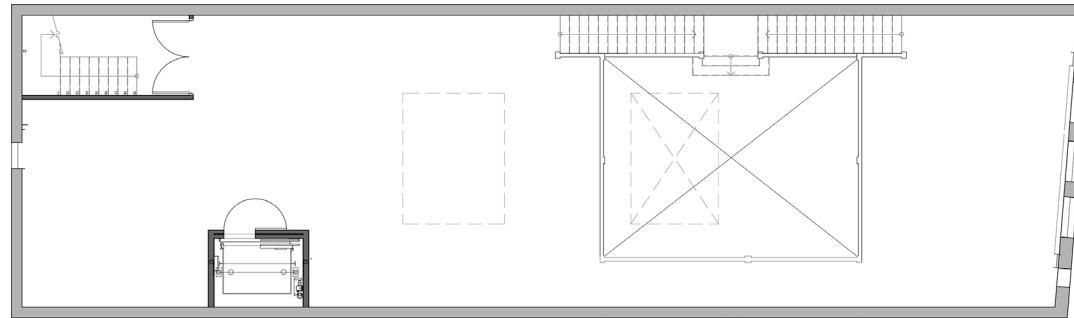




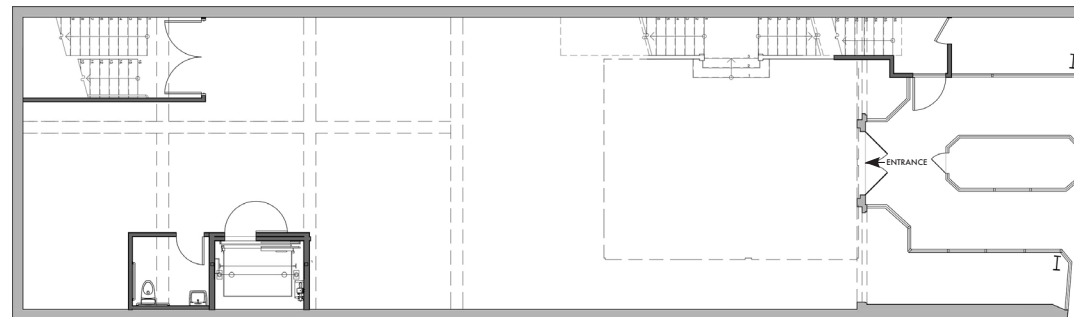
SHATTUCK AVENUE

2026 SHATTUCK
ENTRANCE

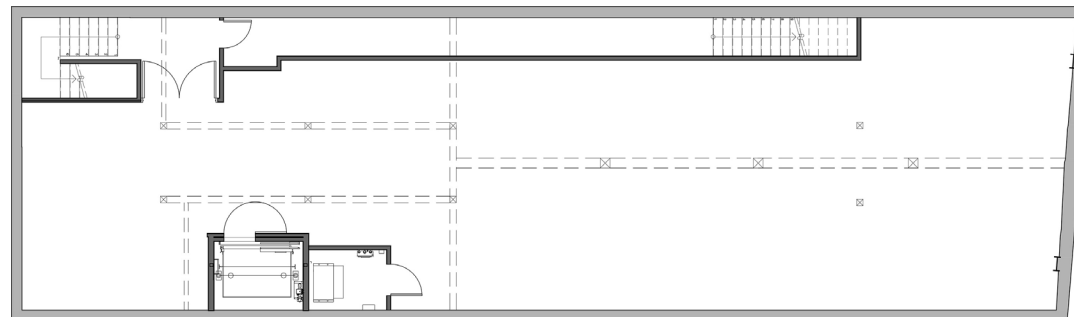
This drawing is intended to be used as an aid for planning. Though care was taken in drawing this floor plan, accuracy is not guaranteed.



UPPER LEVEL



MAIN LEVEL

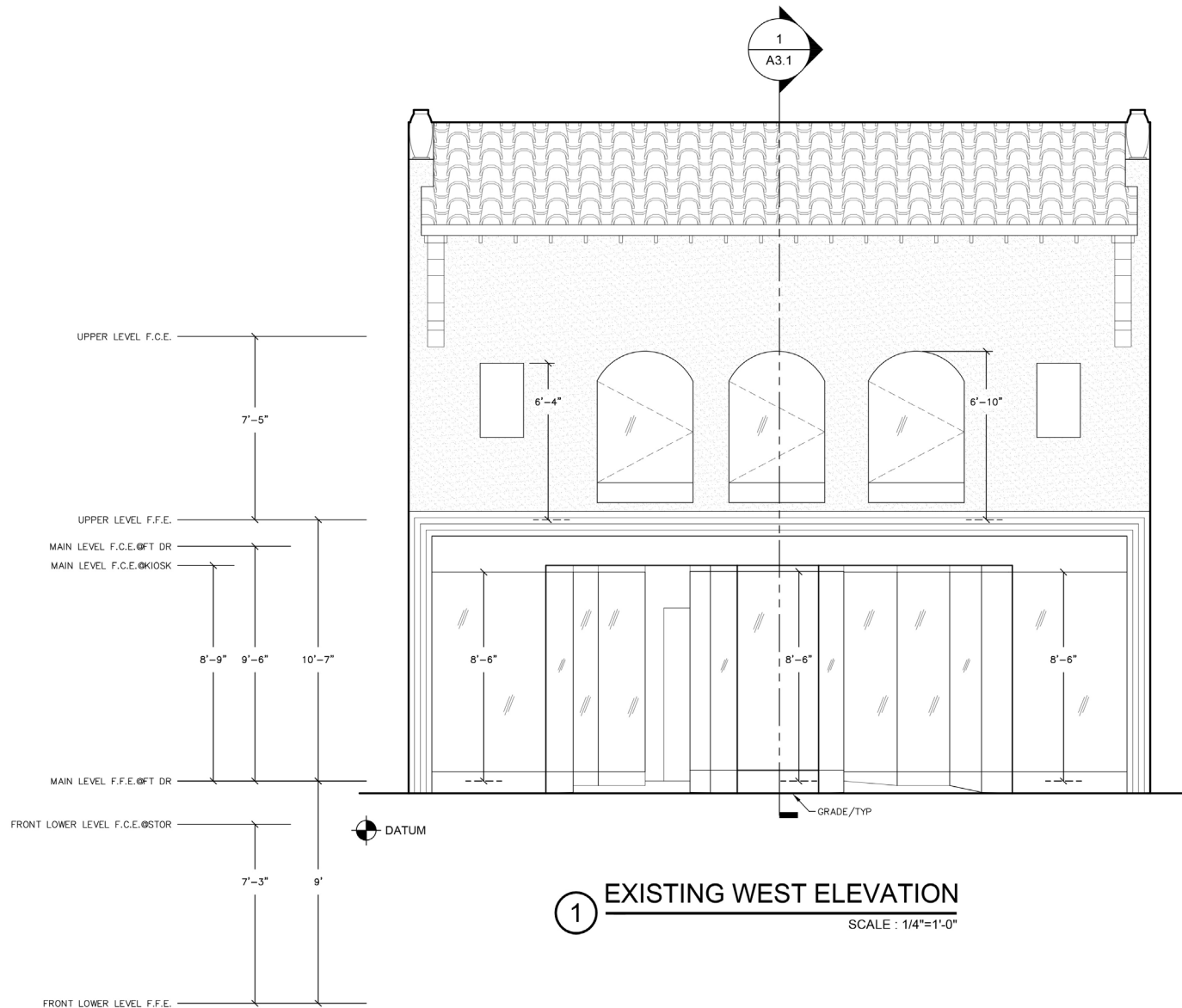


LOWER LEVEL

2026 SHATTUCK
ENTRANCE

SHATTUCK AVENUE

This drawing is intended to be used as an aid for planning. Though care was taken in drawing this floor plan, accuracy is not guaranteed.



This drawing is intended to be used as an aid for planning. Though care was taken in drawing this floor plan, accuracy is not guaranteed.

Berkeley is densely populated with a highly educated, high income population. A central hub of public transportation with its Downtown BART Plaza and AC Transit, allowing access to the entire San Francisco Bay Area in minutes.

- High foot traffic every day; working population is 72,000
- Traffic count on Shattuck Avenue (at Kittredge Street) is 18,498
- UC Berkeley's daily headcount is over 62,000
- Berkeley City College has $\pm 7,000$ students each semester; Berkeley High School has $\pm 3,500$ students annually
- 200 start-up businesses operating in Berkeley, over half of them in Downtown
- Downtown Berkeley has 5,500 residents in its 30-block footprint, with over 1,400 new housing units recently completed
- Walking distance to over 119,000 live theater, music, and sports venue seats
- \$4.04 billion in total spending power



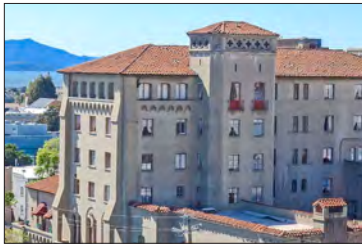
DEMOGRAPHICS

WITHIN 3 MILES

Population	212,725
Average household income	\$142,014
Daytime Employees	142,939

Source: CoStar





BERKELEY CITY CLUB
2315 Durant Avenue – .4 mile



GRADUATE BERKELEY
2600 Durant Avenue – .7 mile



RESIDENCE INN BY MARRIOTT
2129 Shattuck Avenue – 2 blocks



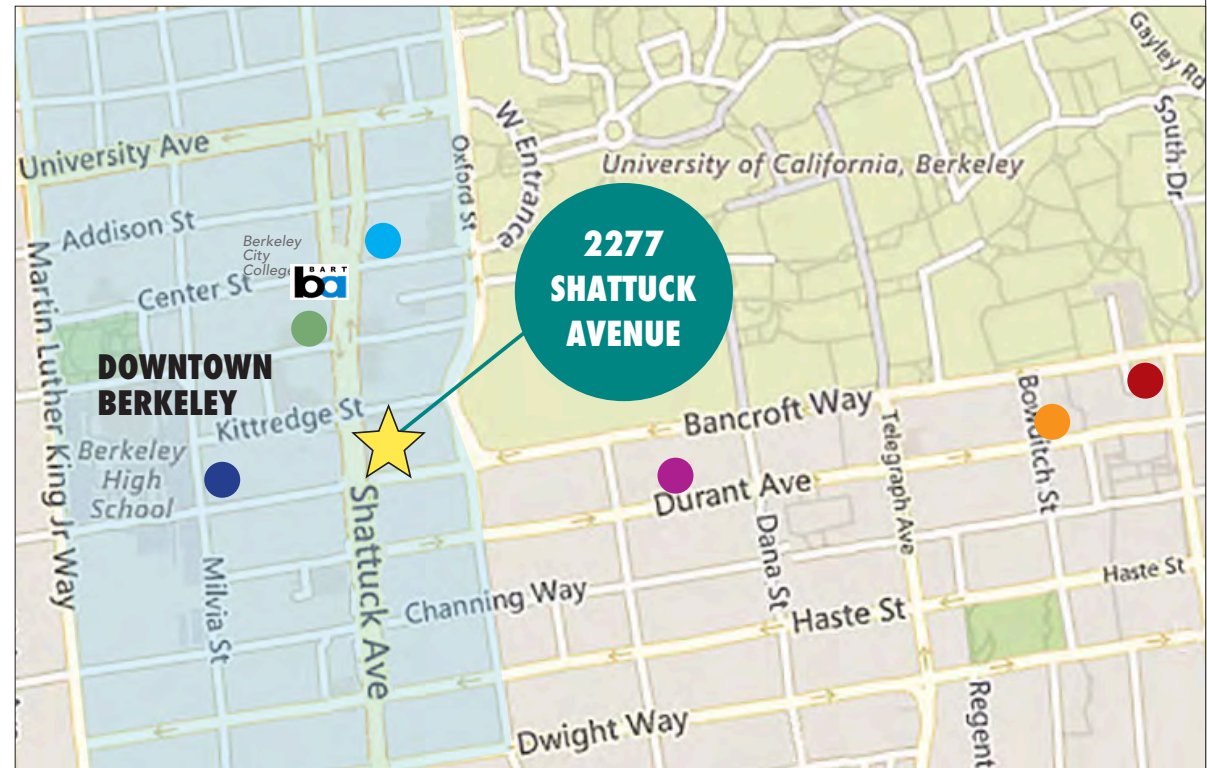
BANCROFT HOTEL
2680 Bancroft Way – .7 mile



HOTEL SHATTUCK PLAZA
2086 Allston Way – 1.5 blocks



DOWNTOWN BERKELEY INN
2001 Bancroft Way – 1 block





STONEFIRE

- 98 residential units
- Opened 2017



THE PANORAMIC

- 69 residential units
- Opened 2019



SEQUOIA

- 42 residential units
- Opened 2017



2556 TELEGRAPH

- 22 residential units
- Under Construction



THE ENCLAVE

- 254 residential units
- Opened 2020



PARKER PLACE

- 155 residential units
- Opened 2017



METROPOLITAN

- 45 residential units
- Opened 2017



THE VARSITY

- 96 residential units
- Opened 2017



STRANDA HOUSE

- 21 residential units
- Opened 2017



GARDEN VILLAGE

- 84 residential units
- Opened 2017



TOWERS

- 155 residential units
- Proposed



THE DEN

- 40 residential units
- Under Construction



THE DWIGHT

- 99 residential units
- Opened 2017



ACHESON COMMONS

- 205 residential units
- Opened 2022



THE LAIR

- 40 residential units
- Proposed



2274 SHATTUCK

- 239 residential units
- Proposed



1752 SHATTUCK

- 68 residential units
- Proposed



1935 ADDISON

- 69 residential units
- Open



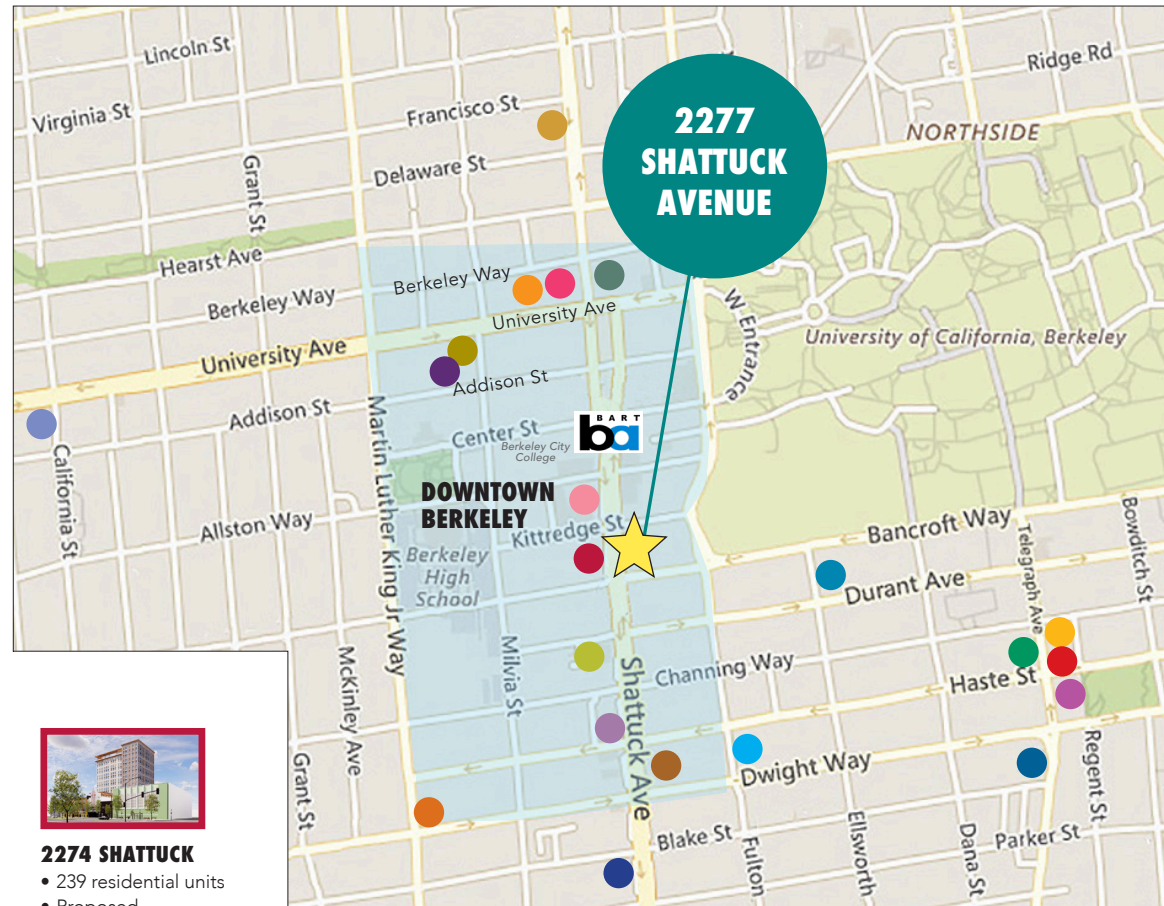
1598 UNIVERSITY

- 210 residential units
- Proposed



2067 UNIVERSITY

- 50 residential units
- Under Construction



RESTAURANTS, BARS AND CAFÉS

Comal Restaurant	Ippudo
Lucia's Italian Restaurant	Blue Bottle Coffee
Tender Greens	Spats Berkeley
The Butcher's Son	Starbucks
Peet's Coffee	Gadani
Sliver Pizzeria	Happy Lemon Berkeley
Ike's Sandwiches	Tupper & Reed Cocktail Bar
Eureka!	

Jupiter Pizza & Beer

Stand-Up Burgers

Crave Subs

Angeline's Louisiana Kitchen

Poki Poke

Sandwich Zone

Chipotle Mexican Grill

Revival Bar + Kitchen

Namaste Madras Cuisine

Gather

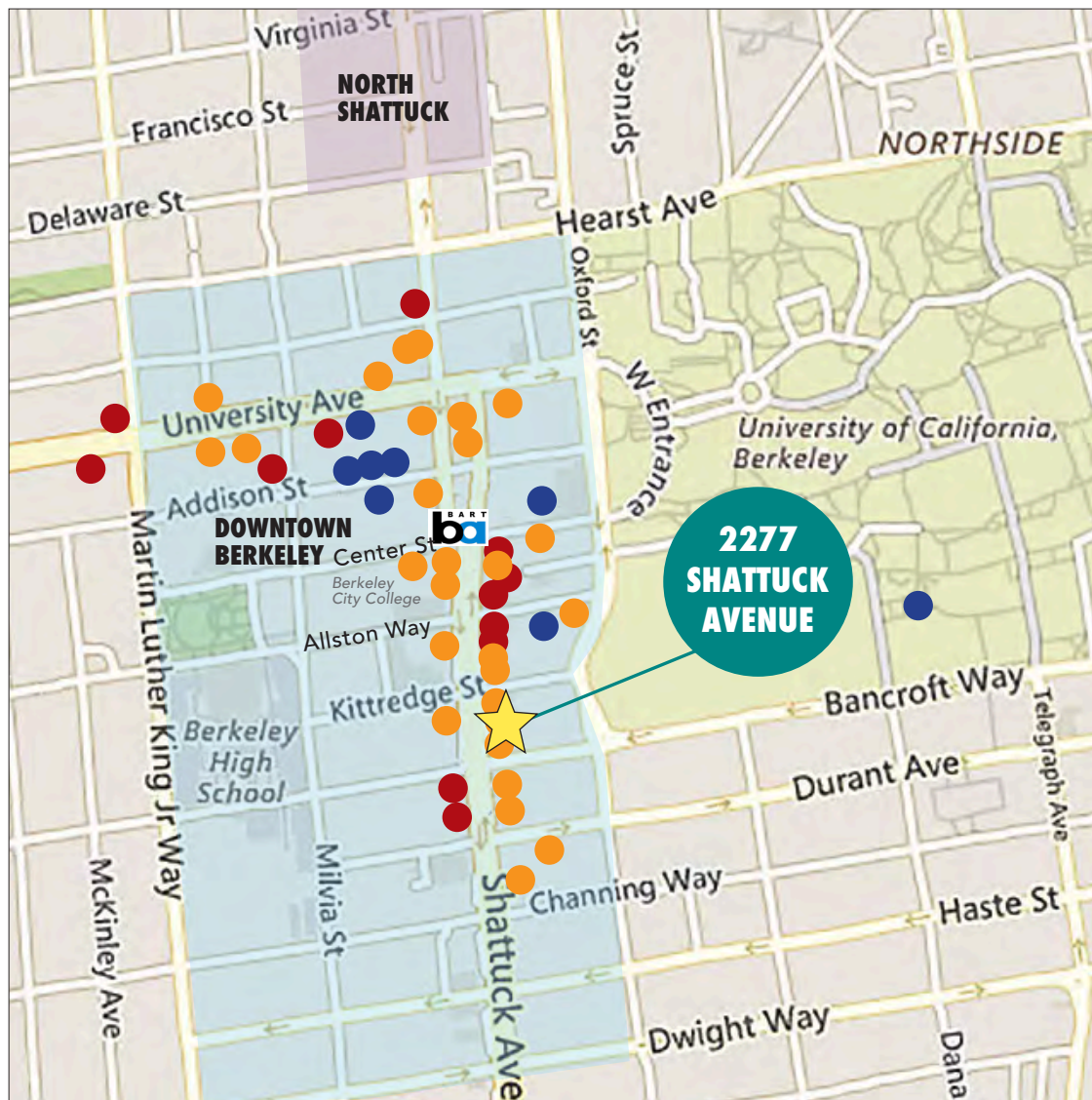
La Note Restaurant

ENTERTAINMENT

UC Theatre
Berkeley Repertory Theatre
Aurora Theatre Company
California Jazz Conservatory
Freight & Salvage
The Back Room
The Marsh Arts Center
Cal Performances/Zellerbach Hall
BAMPFA

RETAIL

Trader Joe's	Target
CVS	Lhasa Karnak Herb Company
UPS Store	Stone Room2
FedEx	Shop College Wear
Verizon	Crossroads Trading
Berkeley Ace Hardware	Mike's Bikes of Berkeley





The information contained herein has been provided by the owner of the property or other sources we deem reliable. We have no reason to doubt its accuracy, but we cannot guarantee it. All information should be verified prior to sale.